

# CAPABILITY STATEMENT



AMM Product Development Pty Ltd

20 Daniels Street,

EMERALD, Qld. 4720

PH: 0488 137 409

[www.ammproductdevelopment.com](http://www.ammproductdevelopment.com)

Product Development Pty. Ltd.



*“We started this company to provide businesses with a local team that utilizes local services to provide high quality competitive products to solve any problems that may arise.*

*Alex Jones, Director*

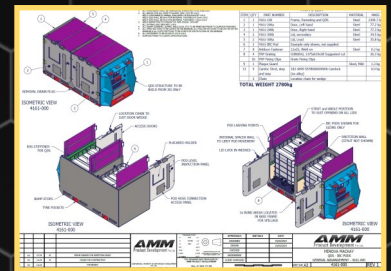
# OUR STORY

AMM is a central Queensland based company who specializes in both the Australian Mining and Manufacturing Sectors. Using positive client engagement, cutting edge technology and driven experienced personnel, our company provides innovative designs to ensure you receive the best solution, first time, every time. If you can dream it, we can design it, manufacture and deliver it.

## WHY CHOOSE AMM?

- PROFESSIONAL PERSONNEL:

Our team of professional personnel, are unparalleled for expertise and dedication. They are industry leaders who bring a wealth of knowledge and experience and innovative thinking to every project. We are committed to delivering tailored solutions that align with your business goals ensuring efficiency, quality, and success. We pride ourselves on our reliability, integrity and relentless pursuit of excellence.



- INNOVATION AND CREATIVITY:

At our core, AMM specializes in developing unique and efficient solutions to the issues and problems that our clients are experiencing. We provide a rapid drafting, design and certification as necessary to ensure your operation progresses with minimal down time. We thrive on pushing boundaries and turning bold ideas into reality. We embrace new technologies and approaches, ensuring your products are at the forefront of industry trends.



# OUR STORY

If you can dream it, we can design it, manufacture and deliver it.

- **EFFICIENCY:**

In today's tough global economic environment, we pride ourselves on our ability to provide high quality results within timeframes and on budget. Our simple, effective designs provide low risk and cost effective results. We streamline the product development process to save you time and resources without compromising on quality. Our expert team uses proven methodologies and state of the art tools to deliver solutions quickly and effectively ensuring your projects are completed on schedule and within budget.



- **HIGH CALIBRE CONTRACTORS:**

It is a point of pride for our company, that we only partner with local contractors and suppliers who share in our beliefs and ideals. Our contractors are meticulously selected for their expertise, professionalism and commitment to quality. Doing so allows us to provide the highest quality and efficient job solutions, whilst supporting our local business community.



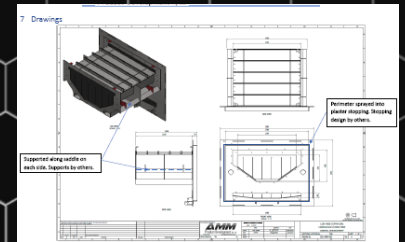
Product Development Pty. Ltd.

# CORE COMPETENCIES

Product Development Pty. Ltd.

## Drafting

Precision, expertise and innovation. Our drafting professionals are masters in translating complex concepts into detailed, accurate plans that drives successful project outcomes. With a keen eye for detail and a deep understanding industry standards, our team ensures that every draft is not only technically sound but also optimized for efficiency and functionality. We use of 3D scanning & Autodesk Inventor software, we have the ability to provide both in depth 3D models and full sets of manufacturing drawings complete with material and cutting lists.



## Design

Where creativity meets excellence. We combine our experienced personnel and modern computer modelling software to give AMM the ability to rapidly and accurately generate design concepts and prototypes. Our team is diverse in experience and problem solving with a design is something our team is cohesively talented in resolving. Dream it, Design it— Deliver it.



## Engineering Certification

We offer comprehensive engineering certification services for any mining, manufacturing or industrial applications. We do this through the use of our specialised stress analysis software and RPEQ certified engineers. We can rapidly locate faults including stress concentrations, provide design alterations and also repair suggestions. Then we can deliver Australian Standard Compliance Certificates and plaques to meet your legislative requirements.



## OUR SERVICES

### PLANNING

Our planning support services are designed to provide you with comprehensive, expert guidance throughout every phase of your project. We focus on creating well structured, actionable plans that anticipate challenges, optimize resources and align with your objectives. With AMM's planning support you gain a partner who helps streamline processes, manage risks and achieve your goals efficiently and effectively.



### SUPPORT

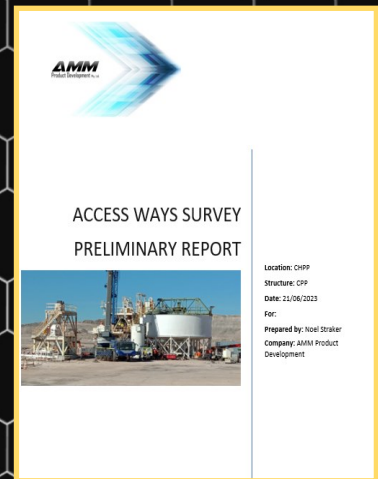
We have personnel and equipment to support your business through times when it needs a helping hand. Whether it is expert advice, urgent repairs or personnel to help get you through. We can provide labor hire should you need assistance with staffing shortages in boilermaking and fitters.



## OUR SERVICES

### INVESTIGATION & ANALYSIS

Our team excels when it comes to ensuring that any system, plant or equipment meets the acceptable criteria of the relevant standards. Our staff can quickly and accurately provide an in depth audit, complete with findings and recommendations reports that can allow your business to make informed decisions.



### OTHER SERVICES:

- 3D Scanning
- 3D Printing
- Non Destructive Testing (NDT)
- Fabrication

Meet Leo  
(the 3d scanner)

## THE TEAM

# OUR AMAZING TEAM

At AMM, from the newest employee through to the Director, our team all share a passion for finding solutions to unique and sometimes challenging problems within the Mine and manufacturer sectors. Our team is dedicated to turning your vision into reality with unmatched expertise and enthusiasm. From concept development to market launch we bring together a diverse group of professional individuals who excel in creativity and engineering. AMM prides itself on being a family friendly workplace.



### ALEX JONES: Managing Director.

Alex brings over 20 years of experience in driving innovation, and operational excellence to AMM. Under his leadership, AMM has successfully transformed groundbreaking ideas into market leading products, leveraging his passion for project management, team building and strategic planning.

Alex has been a part of the Central Qld Mining Industry since the age of 14 when he began as an apprentice diesel fitter. Alex is passionate about the coal mining industry and developing new ideas and innovations. Alex's vision for AMM is to continuously push the boundaries of innovation while maintaining a steadfast focus on client satisfaction and sustainable practices. Outside of work, Alex is an avid go-kart enthusiast and supports many local family orientated organisations.



WE LOVE  
VARIETY

Just take a look at some previous



AVI  
Product Development Pty. Ltd.

No Job is  
too Big or  
too Small

Celebrating an AMM success on one our biggest fabrication projects to date.

AMM took on the design, fabrication and installation supervision some portal ventilation ducting. The project started by using our cutting-edge, 3D scanners to scan the box cut and shape the ducting to suit. The innovative feature of this installation is the positioning of the fan, elevated on the bench to prevent dust and gas recirculation. Our dynamic team's continuous engagement with our client to overcome hurdles and solve problems on the fly. The end result was a success to get this project off the ground in record time.

A big thanks to all our team and business partners who contributed on this project. Job well done!!



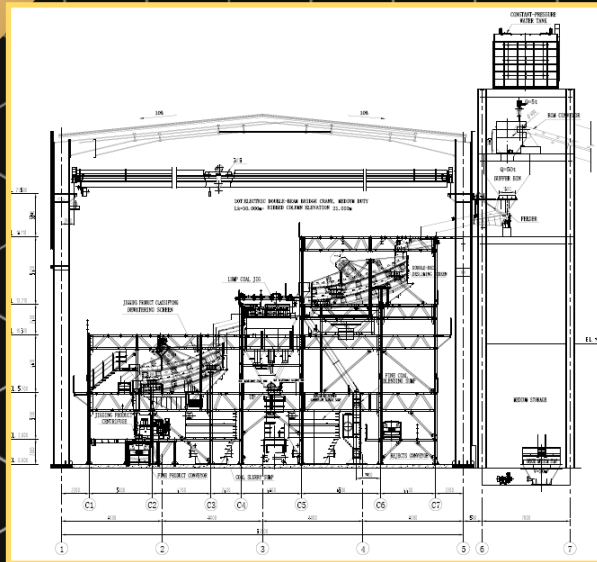
Product Development Pty. Ltd.



No Job is too Big or too Small

### Modular Wash plant Supply

**Job description:** The contractor will be expected to supply, install and commission a modular CPP that can nominally process 250 t/h of clients coal. The plant will need to process an average ROM ash 30% and product moisture needs to be minimized.



**FOR FURTHER INFORMATION  
CONTACT:**

**ALEX JONES**

**0488 137 409**

**[sales@ammproductdevelopment.com](mailto:sales@ammproductdevelopment.com)**

**20 Daniels St, Emerald QLD. 4720**

**Product Development  
Pty. Ltd.**

